

# NDIS Price Guide 2022/2023

**1. Assistance with Daily Life  
(includes Supported Independent Living)**

**2. Transport**

**4. Assistance with Social and Community  
Participation**

**6. Home Modifications**

**7. Assistance In Coordinating Or Managing  
Life Stages, Transitions And Supports**

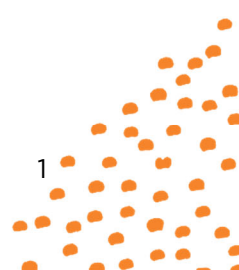
**9. Increased Social and Community  
Participation**

**11. Improved Relationships**

**15. Improved Daily Living Skills**

*NOTE: Temporary Transformation Payment (TTP) supports and codes will be used on all new service agreements. Support Item Numbers ending in a T are TTP Supports.*

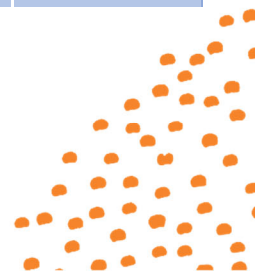
*Pricing from 1 July 2022*



**Assistance with daily life  
(includes Supported Independent Living)**

Support Item Number	Support Item Name	Support Item Description	Unit of Measure	Unit Price
01_002_0107_1_1_T	Assistance With Self-Care Activities - Standard - Weekday Night - TTP	Assistance with, or supervision of, personal tasks of daily living where overnight support is needed and the care giver will not have the option to sleep. Support delivered by a TTP provider.	Hours	\$71.86
01_003_0107_1_1	Assistance From Live-In Carer	A person lives in the house of, or travels with the participant and provides assistance with, and/or supervision of, personal tasks of daily life to develop skills of the participant to live as autonomously as possible.	Hours	
01_004_0107_1_1	Assistance With Personal Domestic Activities	Assist participant to undertake and/or develop skills to maintain their home environment where the participant owns their own home and/or has sole or substantial responsibility for its maintenance. Includes assisting participant to do basic house and yard work.	Hours	\$52.73
01_010_0107_1_1	Assistance With Self-Care Activities - Night-Time Sleepover	Assistance with, or supervision of, personal tasks of daily living where overnight support is needed, but the care giver can sleep when not required to provide support.	Each Support	\$262.16
01_011_0107_1_1_T	Assistance With Self-Care Activities - Standard - Weekday Daytime - TTP	Assisting with, and/or supervising, personal tasks of daily life to develop skills of the participant to live as autonomously as possible. Support delivered by a TTP provider.	Hours	\$64.04
01_012_0107_1_1_T	Assistance With Self-Care Activities - Standard - Public Holiday - TTP	Assisting with, and/or supervising, personal tasks of daily life to develop skills of the participant to live as autonomously as possible. Support delivered by a TTP provider.	Hours	\$142.35
01_013_0107_1_1_T	Assistance With Self-Care Activities - Standard - Saturday - TTP	Assisting with, and/or supervising, personal tasks of daily life to develop skills of the participant to live as autonomously as possible. Support delivered by a TTP provider.	Hours	\$90.14

*NOTE: Temporary Transformation Payment (TTP) supports and codes will be used on all new service agreements. Support Item Numbers ending in a T are TTP Supports.*



## Assistance with Daily Life (inc SIL) (cont'd)

01_014_0107_1_1_T	Assistance With Self-Care Activities - Standard - Sunday - TTP	Assisting with, and/or supervising, personal tasks of daily life to develop skills of the participant to live as autonomously as possible. Support delivered by a TTP provider.	Hours	\$116.24
01_015_0107_1_1_T	Assistance With Self-Care Activities - Standard - Weekday Evening - TTP	Assisting with, and/or supervising, personal tasks of daily life to develop skills of the participant to live as autonomously as possible. Support delivered by a TTP provider.	Hours	\$70.56
01_016_0104_1_1	Specialised Home Based Assistance For A Child	Specialist assistance in the home required due to additional requirements of a child's disability; may be provided to strengthen the sustainability of informal supports.	Hours	\$52.73
01_017_0107_1_1	On-Call Overnight Monitoring - Off Site Or Onsite (Inc. 1 Hr Assist)	Overnight on-call assistance with, or supervision of, personal tasks of daily living.	Each Support	
01_019_0120_1_1	House And/or Yard Maintenance	Performing essential house and/or yard activities that the participant is not able to undertake.	Hours	\$50.87
01_020_0120_1_1	House Cleaning And Other Household Activities	Performing essential house cleaning activities that the participant is not able to undertake.	Hours	\$51.81
01_022_0120_1_1	Assistance With The Cost Of Preparation And Delivery Of Meals	Preparation and delivery of meals to a participant who is unable to do this themselves, and is not in receipt of other supports that would meet the same need. Food costs are not included. Cost varies with the number of meals prepared and deliveries required.	Each Support	
01_023_0120_1_1	Assistance With The Cost Of Preparation And Delivery Of Meals		Each Support	\$1.00
01_026_0115_1_1	Assistance In Living Arrangements (Host Family/Alternative Family Situation)	Agreement for a participant with high support needs to stay with a host family. The host family will have minimum qualifications & provide support in the home for the agreed time. The quote will reflect the hours of assistance required & length of stay.	Day	
01_027_0115_1_1	Assistance In A Shared Living Arrangement	Daily living support provided in a shared living arrangement. This rate is paid by the hour for one-to-one assistance, divided by the number of people supported.	Each Support	

*NOTE: Temporary Transformation Payment (TTP) supports and codes will be used on all new service agreements. Support Item Numbers ending in a T are TTP Supports.*

*Pricing from 1 July 2022*

## Assistance with Daily Life (inc SIL) (cont'd)

01_045_0115_1_1	STA And Assistance (Inc. Respite) - 1:4 - Weekday	Integrated support for self-care, accommodation, food & activities in a centre or group residence for short periods. Includes all expenses in 24 hour period with no additional loading. May be used for up to 14 consecutive days, then weekly rates apply.	Day	\$626.62
01_046_0115_1_1	Assistance In Individual Living Arrangement For Person With ComplexNeeds		Each Support	
01_049_0104_1_1	Establishment Fee For Personal Care/Participation		Each Support	\$621.70
01_049_0107_1_1	Establishment Fee For Personal Care/Participation	Establishment Fee for Personal Care/Community Access (20 hours per month).	Each Support	\$621.70
01_051_0115_1_1	STA And Assistance (Inc. Respite) - 1:4 - Saturday	Integrated support for self-care, accommodation, food & activities in a centre or group residence for short periods. Includes all expenses in 24 hour period with no additional loading. May be used for up to 14 consecutive days, then weekly rates apply.	Day	\$761.02
01_052_0115_1_1	STA And Assistance (Inc. Respite) - 1:4 - Sunday	Integrated support for self-care, accommodation, food & activities in a centre or group residence for short periods. Includes all expenses in 24 hour period with no additional loading. May be used for up to 14 consecutive days, then weekly rates apply.	Day	\$925.60
01_053_0115_1_1	STA And Assistance (Inc. Respite) - 1:4 - Public Holiday	Integrated support for self-care, accommodation, food & activities in a centre or group residence for short periods. Includes all expenses in 24 hour period with no additional loading. May be used for up to 14 consecutive days, then weekly rates apply.	Day	\$1,090.18
01_054_0115_1_1	STA And Assistance (Inc. Respite) - 1:2 - Weekday	Integrated support for self-care, accommodation, food & activities in a centre or group residence for short periods. Includes all expenses in 24 hour period with no additional loading. May be used for up to 14 consecutive days, then weekly rates apply.	Day	\$1,060.48

*NOTE: Temporary Transformation Payment (TTP) supports and codes will be used on all new service agreements. Support Item Numbers ending in a T are TTP Supports.*

*Pricing from 1 July 2022*

## Assistance with Daily Life (inc SIL) (cont'd)

01_055_0115_1_1	STA And Assistance (Inc. Respite) - 1:2 - Saturday	Integrated support for self-care, accommodation, food & activities in a centre or group residence for short periods. Includes all expenses in 24 hour period with no additional loading. May be used for up to 14 consecutive days, then weekly rates apply.	Day	\$1,329.28
01_056_0115_1_1	STA And Assistance (Inc. Respite) - 1:2 - Sunday	Integrated support for self-care, accommodation, food & activities in a centre or group residence for short periods. Includes all expenses in 24 hour period with no additional loading. May be used for up to 14 consecutive days, then weekly rates apply.	Day	\$1,658.44
01_057_0115_1_1	STA And Assistance (Inc. Respite) - 1:2 - Public Holiday	Integrated support for self-care, accommodation, food & activities in a centre or group residence for short periods. Includes all expenses in 24 hour period with no additional loading. May be used for up to 14 consecutive days, then weekly rates apply.	Day	\$1,987.60
01_058_0115_1_1	STA And Assistance (Inc. Respite) - 1:1 - Weekday	Integrated support for self-care, accommodation, food & activities in a centre or group residence for short periods. Includes all expenses in 24 hour period with no additional loading. May be used for up to 14 consecutive days, then weekly rates apply.	Day	\$1,928.20
01_059_0115_1_1	STA And Assistance (Inc. Respite) - 1:1 - Saturday	Integrated support for self-care, accommodation, food & activities in a centre or group residence for short periods. Includes all expenses in 24 hour period with no additional loading. May be used for up to 14 consecutive days, then weekly rates apply.	Day	\$2,465.80
01_060_0115_1_1	STA And Assistance (Inc. Respite) - 1:1 - Sunday	Integrated support for self-care, accommodation, food & activities in a centre or group residence for short periods. Includes all expenses in 24 hour period with no additional loading. May be used for up to 14 consecutive days, then weekly rates apply.	Day	\$3,124.12

*NOTE: Temporary Transformation Payment (TTP) supports and codes will be used on all new service agreements. Support Item Numbers ending in a T are TTP Supports.*

*Pricing from 1 July 2022*

## Assistance with Daily Life (inc SIL) (cont'd)

01_061_0115_1_1	STA And Assistance (Inc. Respite) - 1:1 - Public Holiday	Integrated support for self-care, accommodation, food & activities in a centre or group residence for short periods. Includes all expenses in 24 hour period with no additional loading. May be used for up to 14 consecutive days, then weekly rates apply.	Day	\$3,782.44
01_062_0115_1_1	STA And Assistance (Inc. Respite) - 1:3 - Weekday	Integrated support for self-care, accommodation, food & activities in a centre or group residence for short periods. Includes all expenses in 24 hour period with no additional loading. May be used for up to 14 consecutive days, then weekly rates apply.	Day	\$771.24
01_063_0115_1_1	STA And Assistance (Inc. Respite) - 1:3 - Saturday	Integrated support for self-care, accommodation, food & activities in a centre or group residence for short periods. Includes all expenses in 24 hour period with no additional loading. May be used for up to 14 consecutive days, then weekly rates apply.	Day	\$950.44
01_064_0115_1_1	STA And Assistance (Inc. Respite) - 1:3 - Sunday	Integrated support for self-care, accommodation, food & activities in a centre or group residence for short periods. Includes all expenses in 24 hour period with no additional loading. May be used for up to 14 consecutive days, then weekly rates apply.	Day	\$1,169.88
01_065_0115_1_1	STA And Assistance (Inc. Respite) - 1:3 - Public Holiday	Integrated support for self-care, accommodation, food & activities in a centre or group residence for short periods. Includes all expenses in 24 hour period with no additional loading. May be used for up to 14 consecutive days, then weekly rates apply.	Day	\$1,389.32
01_082_0115_1_1	Medium Term Accommodation	This item covers the accommodation costs of Medium Term Accommodation. The support component of the care to claimed separately at the relevant time of day and day of week. This item can be used for periods up to 90 days.	Day	\$137.15

*NOTE: Temporary Transformation Payment (TTP) supports and codes will be used on all new service agreements. Support Item Numbers ending in a T are TTP Supports.*

*Pricing from 1 July 2022*

## Assistance with Daily Life (inc SIL) (cont'd)

01_400_0104_1_1_T	Assistance With Self-Care Activities - Level 2 - Weekday Daytime - TTP	Assisting with, and/or supervising, personal tasks of daily life to develop skills of the participant to live as autonomously as possible in circumstances where the support delivered is high intensity and a more skilled or experienced support worker is required. Support delivered by a TTP provider.	Hours	\$69.15
01_401_0104_1_1_T	Assistance With Self-Care Activities - Level 2 - Weekday Evening - TTP	Assisting with, and/or supervising, personal tasks of daily life to develop skills of the participant to live as autonomously as possible in circumstances where the support delivered is high intensity and a more skilled or experienced support worker is required. Support delivered by a TTP provider.	Hours	\$76.20
01_402_0104_1_1_T	Assistance With Self-Care Activities - Level 2 - Saturday - TTP	Assisting with, and/or supervising, personal tasks of daily life to develop skills of the participant to live as autonomously as possible in circumstances where the support delivered is high intensity and a more skilled or experienced support worker is required. Support delivered by a TTP provider.	Hours	\$97.34
01_403_0104_1_1_T	Assistance With Self-Care Activities - Level 2 - Sunday - TTP	Assisting with, and/or supervising, personal tasks of daily life to develop skills of the participant to live as autonomously as possible in circumstances where the support delivered is high intensity and a more skilled or experienced support worker is required. Support delivered by a TTP provider.	Hours	\$125.53
01_404_0104_1_1_T	Assistance With Self-Care Activities - Level 2 - Public Holiday - TTP	Assisting with, and/or supervising, personal tasks of daily life to develop skills of the participant to live as autonomously as possible in circumstances where the support delivered is high intensity and a more skilled or experienced support worker is required. Support delivered by a TTP provider.	Hours	\$153.72

*NOTE: Temporary Transformation Payment (TTP) supports and codes will be used on all new service agreements. Support Item Numbers ending in a T are TTP Supports.*

*Pricing from 1 July 2022*

## Assistance with Daily Life (inc SIL) (cont'd)

01_405_0104_1_1_T	Assistance With Self-Care Activities - Level 2 - Weekday Night - TTP	Assistance with, or supervision of, personal tasks of daily living where overnight support is needed and the care giver will not have the option to sleep in circumstances where the support delivered is high intensity and a more skilled or experienced support worker is required. Support delivered by a TTP provider.	Hours	\$77.60
01_799_0104_1_1	Provider travel - non-labour costs	High Intensity Daily Personal Activities	Each Support	\$0.97
01_799_0106_1_1	Provider travel - non-labour costs	Assistance In Coordinating Or Managing Life Stages, Transitions And Supports	Each Support	\$0.97
01_799_0107_1_1	Provider travel - non-labour costs	Daily Personal Activities	Each Support	\$0.97
01_799_0115_1_1	Provider travel - non-labour costs	Assistance With Daily Life Tasks In A Group Or Shared Living Arrangement	Each Support	\$0.97
01_799_0117_8_1	Provider travel - non-labour costs	Development Of Daily Living And Life Skills	Each Support	\$0.97
01_799_0120_1_1	Provider travel - non-labour costs	Household Tasks	Each Support	\$0.97
01_799_0132_1_1	Provider travel - non-labour costs	Support Coordination	Each Support	\$0.97
01_801_0115_1_1	Assistance in Supported independent Living - Standard - Weekday Daytime	1:1 rate - the unit price is adjusted inline with ratio of staff to client	Hours	\$62.17
01_802_0115_1_1	Assistance in Supported independent Living - Standard - Weekday Evening	1:1 rate - the unit price is adjusted inline with ratio of staff to client	Hours	\$68.50
01_803_0115_1_1	Assistance in Supported independent Living - Standard - Weekday Night	1:1 rate - the unit price is adjusted inline with ratio of staff to client	Hours	\$69.77
01_804_0115_1_1	Assistance in Supported independent Living - Standard - Saturday	1:1 rate - the unit price is adjusted inline with ratio of staff to client	Hours	\$87.51
01_805_0115_1_1	Assistance in Supported independent Living - Standard - Sunday	1:1 rate - the unit price is adjusted inline with ratio of staff to client	Hours	\$112.85
01_806_0115_1_1	Assistance in Supported independent Living - Standard - Public Holiday	1:1 rate - the unit price is adjusted inline with ratio of staff to client	Hours	\$138.20

*NOTE: Temporary Transformation Payment (TTP) supports and codes will be used on all new service agreements. Support Item Numbers ending in a T are TTP Supports.*

*Pricing from 1 July 2022*



## Assistance with Daily Life (inc SIL) (cont'd)

01_811_0115_1_1	Assistance in Supported Independent Living - High Intensity - WeekdayDaytime	1:1 rate - the unit price is adjusted inline with ratio of staff to client	Hours	\$67.28
01_812_0115_1_1	Assistance in Supported Independent Living - High Intensity - WeekdayEvening	1:1 rate - the unit price is adjusted inline with ratio of staff to client	Hours	\$74.14
01_813_0115_1_1	Assistance in Supported Independent Living - High Intensity - WeekdayNight	1:1 rate - the unit price is adjusted inline with ratio of staff to client	Hours	\$75.51
01_814_0115_1_1	Assistance in Supported Independent Living - High Intensity - Saturday	1:1 rate - the unit price is adjusted inline with ratio of staff to client	Hours	\$94.71
01_815_0115_1_1	Assistance in Supported Independent Living - High Intensity - Sunday	1:1 rate - the unit price is adjusted inline with ratio of staff to client	Hours	\$122.14
01_816_0115_1_1	Assistance in Supported Independent Living - High Intensity - PublicHoliday	1:1 rate - the unit price is adjusted inline with ratio of staff to client	Hours	\$149.57
01_821_0115_1_1	Assistance in Supported Independent Living - Weekly		WK	
01_822_0115_1_1	Assistance in Supported Independent Living - Exit Accommodation Permanently		WK	
01_832_0115_1_1	Assistance in Supported independent Living - Night-Time Sleepover	1:1 rate - the unit price is adjusted inline with ratio of staff to client	Each Support	\$262.16
01_850_0106_1_1	Individual Living Options - Exploration and Design		Hours	\$100.14
01_851_0115_1_1	Individual Living Options - Support Model		Week	

*NOTE: Temporary Transformation Payment (TTP) supports and codes will be used on all new service agreements. Support Item Numbers ending in a T are TTP Supports.*

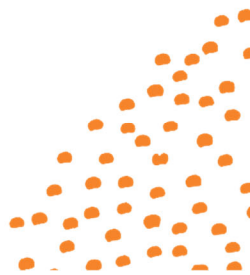
*Pricing from 1 July 2022*

## Transport

Support Item Number	Support Item	Support Item Description	Unit of Measure	Unit Price
02_050_0108_1_1	Specialised Transport To School/ Educational Facility/ Employment/ Community	Specialised transport to school/ educational facility/ employment/ community	Day	To be quoted
02_051_0108_1_1	Transport	<p>Transport to “an activity that is not itself a support – or to a support that is delivered by another provider”. This category includes transport to mainstream supports (eg. GPs) and friends/family, services delivered by other providers etc.)</p> <p>Rise currently has three transport rates:            .97c per km            \$2.76 per km in a modified vehicle            \$5 per way for group transport</p>	Km or trip	See Description

*NOTE: Temporary Transformation Payment (TTP) supports and codes will be used on all new service agreements. Support Item Numbers ending in a T are TTP Supports.*

*Pricing from 1 July 2022*

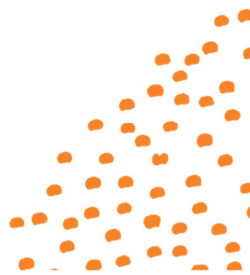


## Assistance with Social and Community Participation

Support Item Number	Support Item Name	Support Item Description	Unit of Measure	Unit Price
04_049_0104_1_1	Establishment Fee For Personal Care/Participation		Each Support	\$621.70
04_049_0125_1_1	Establishment Fee For Personal Care/Participation		Each Support	\$621.70
04_049_0136_1_1	Establishment Fee For Personal Care/Participation		Each Support	\$621.70
04_102_0125_6_1_T	Access Community Social And Rec Activities - Public Holiday - TTP	Provision of support to enable a participant to engage in community, social and/or recreational activities. Support delivered by a TTP provider.	Hours	\$142.35
04_102_0136_6_1_T	Group Activities - Standard - Weekday Daytime - TTP	Ratio: 1:1 - the rate will be reduced based on the client to staff ratio. This support item and rate will replace existing group support items as at 1/7/2022.	Hours	\$64.04
04_103_0125_6_1_T	Access Community Social And Rec Activities - Standard - Weekday Evening-TTP	Provision of support to enable a participant to engage in community, social and/or recreational activities. Support delivered by a TTP provider.	Hours	\$70.56
04_103_0136_6_1_T	Group Activities - Standard - Weekday Evening - TTP	Ratio: 1:1 - the rate will be reduced based on the client to staff ratio. This support item and rate will replace existing group support items as at 1/7/2022.	Hours	\$70.56
04_104_0125_6_1_T	Access Community Social And Rec Activities - Weekday Daytime - TTP	Provision of support to enable a participant to engage in community, social and/or recreational activities. Support delivered by a TTP provider.	Hours	\$64.04
04_104_0136_6_1_T	Group Activities - Standard - Saturday - TTP	Ratio: 1:1 - the rate will be reduced based on the client to staff ratio. This support item and rate will replace existing group support items as at 1/7/2022.	Hours	\$90.14

*NOTE: Temporary Transformation Payment (TTP) supports and codes will be used on all new service agreements. Support Item Numbers ending in a T are TTP Supports.*

*Pricing from 1 July 2022*



## Assistance with Social and Community Participation (cont'd)

Support Item Number	Support Item Name	Support Item Description	Unit of Measure	Unit Price
04_105_0125_6_1_T	Access Community Social And Rec Activities - Standard - Saturday - TTP	Provision of support to enable a participant to engage in community, social and/or recreational activities. Support delivered by a TTP provider.	Hours	\$90.14
04_105_0136_6_1_T	Group Activities - Standard - Sunday - TTP	Ratio: 1:1 - the rate will be reduced based on the client to staff ratio. This support item and rate will replace existing group support items as at 1/7/2022.	Hours	\$116.24
04_106_0125_6_1_T	Access Community Social And Rec Activities - Standard - Sunday - TTP	Provision of support to enable a participant to engage in community, social and/or recreational activities. Support delivered by a TTP provider.	Hours	\$116.24
04_106_0136_6_1_T	Group Activities - Standard - Public Holiday - TTP	Ratio: 1:1 - the rate will be reduced based on the client to staff ratio. This support item and rate will replace existing group support items as at 1/7/2022.	Hours	\$142.35
04_111_0136_6_1_T	Group Activities In The Community - 1:2 - Standard - Weekday Daytime-TTP	Provision of support to enable a participant to engage in community, social and/or recreational activities. Support delivered by a TTP provider.	Hours	\$35.86
04_112_0136_6_1_T	Group Activities In The Community - 1:2 - Standard - Saturday - TTP	Provision of support to enable a participant to engage in community, social and/or recreational activities. Support delivered by a TTP provider.	Hours	\$50.48
04_113_0136_6_1_T	Group Activities In The Community - 1:2 - Standard - Sunday - TTP	Provision of support to enable a participant to engage in community, social and/or recreational activities. Support delivered by a TTP provider.	Hours	\$65.09
04_114_0136_6_1_T	Group Activities In The Community - 1:2 - Standard - Weekday Afternoon-TTP	Provision of support to enable a participant to engage in community, social and/or recreational activities. Support delivered by a TTP provider.	Hours	\$39.51
04_116_0104_6_1_T	Group Activities In The Community - 1:2 - Complex - Weekday Daytime -TTP	Provision of support to enable a participant to engage in community, social and/or recreational activities, where a support worker with additional qualifications and experience relevant to the participant's complex needs is required. Support delivered by a TTP provider.	Hours	\$38.72

*NOTE: Temporary Transformation Payment (TTP) supports and codes will be used on all new service agreements. Support Item Numbers ending in a T are TTP Supports.*

*Pricing from 1 July 2022*

### Assistance with Social and Community Participation (cont'd)

04_117_0104_6_1_T	Group Activities In The Community - 1:2 - Complex - Saturday - TTP	Provision of support to enable a participant to engage in community, social and/or recreational activities, where a support worker with additional qualifications and experience relevant to the participant's complex needs is required. Support delivered by a TTP provider.	Hours	\$54.51
04_118_0104_6_1_T	Group Activities In The Community - 1:2 - Complex - Sunday - TTP	Provision of support to enable a participant to engage in community, social and/or recreational activities, where a support worker with additional qualifications and experience relevant to the participant's complex needs is required. Support delivered by a TTP provider.	Hours	\$70.30
04_119_0104_6_1_T	Group Activities In The Community - 1:2 - Complex - Weekday Afternoon-TTP	Provision of support to enable a participant to engage in community, social and/or recreational activities, where a support worker with additional qualifications and experience relevant to the participant's complex needs is required. Support delivered by a TTP provider.	Hours	\$42.67
04_120_0136_6_1_T	Group Activities In The Community - 1:3 - Standard - Weekday Daytime-TTP	Provision of support to enable a participant to engage in community, social and/or recreational activities. Support delivered by a TTP provider.	Hours	\$26.47
04_121_0136_6_1_T	Group Activities In The Community - 1:3 - Standard - Saturday - TTP	Provision of support to enable a participant to engage in community, social and/or recreational activities. Support delivered by a TTP provider.	Hours	\$37.26
04_122_0136_6_1_T	Group Activities In The Community - 1:3 - Standard - Sunday - TTP	Provision of support to enable a participant to engage in community, social and/or recreational activities. Support delivered by a TTP provider.	Hours	\$48.05
04_123_0136_6_1_T	Group Activities In The Community - 1:3 - Standard - Weekday Afternoon-TTP	Provision of support to enable a participant to engage in community, social and/or recreational activities. Support delivered by a TTP provider.	Hours	\$29.16

*NOTE: Temporary Transformation Payment (TTP) supports and codes will be used on all new service agreements. Support Item Numbers ending in a T are TTP Supports.*

*Pricing from 1 July 2022*

### Assistance with Social and Community Participation (cont'd)

04_124_0104_6_1_T	Group Activities In The Community - 1:3 - Complex - Weekday Daytime -TTP	Provision of support to enable a participant to engage in community, social and/or recreational activities, where a support worker with additional qualifications and experience relevant to the participant's complex needs is required. Support delivered by a TTP provider.	Hours	\$28.58
04_125_0104_6_1_T	Group Activities In The Community - 1:3 - Complex - Saturday - TTP	Provision of support to enable a participant to engage in community, social and/or recreational activities, where a support worker with additional qualifications and experience relevant to the participant's complex needs is required. Support delivered by a TTP provider.	Hours	\$40.23
04_126_0104_6_1_T	Group Activities In The Community - 1:3 - Complex - Sunday - TTP	Provision of support to enable a participant to engage in community, social and/or recreational activities, where a support worker with additional qualifications and experience relevant to the participant's complex needs is required. Support delivered by a TTP provider.	Hours	\$51.89
04_127_0104_6_1_T	Group Activities In The Community - 1:3 - Complex - Weekday Afternoon-TTP	Provision of support to enable a participant to engage in community, social and/or recreational activities, where a support worker with additional qualifications and experience relevant to the participant's complex needs is required. Support delivered by a TTP provider.	Hours	\$31.50
04_128_0136_6_1_T	Group Activities In The Community - 1:2 - Standard - Public Holiday -TTP	Provision of support to enable a participant to engage in community, social and/or recreational activities. Support delivered by a TTP provider.	Hours	\$79.72
04_136_0136_6_1_T	Group Activities In The Community - 1:4 - Standard - Weekday Daytime-TTP	Provision of support to enable a participant to engage in community, social and/or recreational activities. Support delivered by a TTP provider.	Hours	\$21.77

*NOTE: Temporary Transformation Payment (TTP) supports and codes will be used on all new service agreements. Support Item Numbers ending in a T are TTP Supports.*

*Pricing from 1 July 2022*

### Assistance with Social and Community Participation (cont'd)

04_137_0136_6_1_T	Group Activities In The Community - 1:4 - Standard - Weekday Afternoon-TTP	Provision of support to enable a participant to engage in community, social and/or recreational activities. Support delivered by a TTP provider.	Hours	\$23.99
04_138_0136_6_1_T	Group Activities In The Community - 1:4 - Standard - Saturday - TTP	Provision of support to enable a participant to engage in community, social and/or recreational activities. Support delivered by a TTP provider.	Hours	\$30.65
04_139_0136_6_1_T	Group Activities In The Community - 1:4 - Standard - Sunday - TTP	Provision of support to enable a participant to engage in community, social and/or recreational activities. Support delivered by a TTP provider.	Hours	\$39.52
04_141_0136_6_1_T	Group Activities In The Community - 1:5 - Standard - Weekday Daytime-TTP	Provision of support to enable a participant to engage in community, social and/or recreational activities. Support delivered by a TTP provider.	Hours	\$18.96
04_142_0136_6_1_T	Group Activities In The Community - 1:5 - Standard - Weekday Afternoon-TTP	Provision of support to enable a participant to engage in community, social and/or recreational activities. Support delivered by a TTP provider.	Hours	\$20.89
04_143_0136_6_1_T	Group Activities In The Community - 1:5 - Standard - Saturday - TTP	Provision of support to enable a participant to engage in community, social and/or recreational activities. Support delivered by a TTP provider.	Hours	\$26.68
04_144_0136_6_1_T	Group Activities In The Community - 1:5 - Standard - Sunday - TTP	Provision of support to enable a participant to engage in community, social and/or recreational activities. Support delivered by a TTP provider.	Hours	\$34.41
04_146_0104_6_1_T	Group Activities In The Community - 1:4 - Complex - Weekday Daytime -TTP	Provision of support to enable a participant to engage in community, social and/or recreational activities, where a support worker with additional qualifications and experience relevant to the participant's complex needs is required. Support delivered by a TTP provider.	Hours	\$23.51

*NOTE: Temporary Transformation Payment (TTP) supports and codes will be used on all new service agreements. Support Item Numbers ending in a T are TTP Supports.*

*Pricing from 1 July 2022*

### Assistance with Social and Community Participation (cont'd)

04_147_0104_6_1_T	Group Activities In The Community - 1:4 - Complex - Weekday Afternoon-TTP	Provision of support to enable a participant to engage in community, social and/or recreational activities, where a support worker with additional qualifications and experience relevant to the participant's complex needs is required. Support delivered by a TTP provider.	Hours	\$25.91
04_148_0104_6_1_T	Group Activities In The Community - 1:4 - Complex - Saturday - TTP	Provision of support to enable a participant to engage in community, social and/or recreational activities, where a support worker with additional qualifications and experience relevant to the participant's complex needs is required. Support delivered by a TTP provider.	Hours	\$33.10
04_149_0104_6_1_T	Group Activities In The Community - 1:4 - Complex - Sunday - TTP	Provision of support to enable a participant to engage in community, social and/or recreational activities, where a support worker with additional qualifications and experience relevant to the participant's complex needs is required. Support delivered by a TTP provider.	Hours	\$42.68
04_151_0104_6_1_T	Group Activities In The Community - 1:5 - Complex - Weekday Daytime -TTP	Provision of support to enable a participant to engage in community, social and/or recreational activities, where a support worker with additional qualifications and experience relevant to the participant's complex needs is required. Support delivered by a TTP provider.	Hours	\$20.47
04_152_0104_6_1_T	Group Activities In The Community - 1:5 - Complex - Weekday Afternoon-TTP	Provision of support to enable a participant to engage in community, social and/or recreational activities, where a support worker with additional qualifications and experience relevant to the participant's complex needs is required. Support delivered by a TTP provider.	Hours	\$22.56

*NOTE: Temporary Transformation Payment (TTP) supports and codes will be used on all new service agreements. Support Item Numbers ending in a T are TTP Supports.*

*Pricing from 1 July 2022*



### Assistance with Social and Community Participation (cont'd)

04_153_0104_6_1_T	Group Activities In The Community - 1:5 - Complex - Saturday - TTP	Provision of support to enable a participant to engage in community, social and/or recreational activities, where a support worker with additional qualifications and experience relevant to the participant's complex needs is required. Support delivered by a TTP provider.	Hours	\$28.81
04_154_0104_6_1_T	Group Activities In The Community - 1:5 - Complex - Sunday - TTP	Provision of support to enable a participant to engage in community, social and/or recreational activities, where a support worker with additional qualifications and experience relevant to the participant's complex needs is required. Support delivered by a TTP provider.	Hours	\$37.16
04_160_0136_6_1_T	Group Activities In A Centre - 1:1 - Standard - Weekday Daytime - TTP	Provision of support to enable a participant to engage in community, social and/or recreational activities in a centre. Support delivered by a TTP provider.	Hours	\$66.32
04_161_0136_6_1_T	Group Activities In A Centre - 1:1 - Standard - Weekday Afternoon - TTP	Provision of support to enable a participant to engage in community, social and/or recreational activities in a centre. Support delivered by a TTP provider.	Hours	\$72.84
04_162_0136_6_1_T	Group Activities In A Centre - 1:1 - Standard - Saturday - TTP	Provision of support to enable a participant to engage in community, social and/or recreational activities in a centre. Support delivered by a TTP provider.	Hours	\$92.42
04_163_0136_6_1_T	Group Activities In A Centre - 1:1 - Standard - Sunday - TTP	Provision of support to enable a participant to engage in community, social and/or recreational activities in a centre. Support delivered by a TTP provider.	Hours	\$118.52
04_164_0136_6_1_T	Group Activities In A Centre - 1:1 - Standard - Public Holiday - TTP	Provision of support to enable a participant to engage in community, social and/or recreational activities in a centre. Support delivered by a TTP provider.	Hours	\$144.63

*NOTE: Temporary Transformation Payment (TTP) supports and codes will be used on all new service agreements. Support Item Numbers ending in a T are TTP Supports.*

*Pricing from 1 July 2022*

### Assistance with Social and Community Participation (cont'd)

04_165_0136_6_1_T	Group Activities In A Centre - 1:2 - Standard - Weekday Daytime - TTP	Provision of support to enable a participant to engage in community, social and/or recreational activities in a centre. Support delivered by a TTP provider.	Hours	\$38.14
04_166_0136_6_1_T	Group Activities In A Centre - 1:2 - Standard - Weekday Afternoon - TTP	Provision of support to enable a participant to engage in community, social and/or recreational activities in a centre. Support delivered by a TTP provider.	Hours	\$41.79
04_167_0136_6_1_T	Group Activities In A Centre - 1:2 - Standard - Saturday - TTP	Provision of support to enable a participant to engage in community, social and/or recreational activities in a centre. Support delivered by a TTP provider.	Hours	\$52.76
04_168_0136_6_1_T	Group Activities In A Centre - 1:2 - Standard - Sunday - TTP	Provision of support to enable a participant to engage in community, social and/or recreational activities in a centre. Support delivered by a TTP provider.	Hours	\$67.37
04_169_0136_6_1_T	Group Activities In A Centre - 1:2 - Standard - Public Holiday - TTP	Provision of support to enable a participant to engage in community, social and/or recreational activities in a centre. Support delivered by a TTP provider.	Hours	\$82.00
04_170_0136_6_1_T	Group Activities In A Centre - 1:3 - Standard - Weekday Daytime - TTP	Provision of support to enable a participant to engage in community, social and/or recreational activities in a centre. Support delivered by a TTP provider.	Hours	\$28.75
04_171_0136_6_1_T	Group Activities In A Centre - 1:3 - Standard - Weekday Afternoon - TTP	Provision of support to enable a participant to engage in community, social and/or recreational activities in a centre. Support delivered by a TTP provider.	Hours	\$31.44
04_172_0136_6_1_T	Group Activities In A Centre - 1:3 - Standard - Saturday - TTP	Provision of support to enable a participant to engage in community, social and/or recreational activities in a centre. Support delivered by a TTP provider.	Hours	\$39.54
04_173_0136_6_1_T	Group Activities In A Centre - 1:3 - Standard - Sunday - TTP	Provision of support to enable a participant to engage in community, social and/or recreational activities in a centre. Support delivered by a TTP provider.	Hours	\$50.33

*NOTE: Temporary Transformation Payment (TTP) supports and codes will be used on all new service agreements. Support Item Numbers ending in a T are TTP Supports.*

*Pricing from 1 July 2022*

## Assistance with Social and Community Participation (cont'd)

04_174_0136_6_1_T	Group Activities In A Centre - 1:3 - Standard - Public Holiday - TTP	Provision of support to enable a participant to engage in community, social and/or recreational activities in a centre. Support delivered by a TTP provider.	Hours	\$61.12
04_175_0136_6_1_T	Group Activities In A Centre - 1:4 - Standard - Weekday Daytime - TTP	Provision of support to enable a participant to engage in community, social and/or recreational activities in a centre. Support delivered by a TTP provider.	Hours	\$24.05
04_176_0136_6_1_T	Group Activities In A Centre - 1:4 - Standard - Weekday Afternoon - TTP	Provision of support to enable a participant to engage in community, social and/or recreational activities in a centre. Support delivered by a TTP provider.	Hours	\$26.27
04_177_0136_6_1_T	Group Activities In A Centre - 1:4 - Standard - Saturday - TTP	Provision of support to enable a participant to engage in community, social and/or recreational activities in a centre. Support delivered by a TTP provider.	Hours	\$32.93
04_178_0136_6_1_T	Group Activities In A Centre - 1:4 - Standard - Sunday - TTP	Provision of support to enable a participant to engage in community, social and/or recreational activities in a centre. Support delivered by a TTP provider.	Hours	\$41.80
04_179_0136_6_1_T	Group Activities In A Centre - 1:4 - Standard - Public Holiday - TTP	Provision of support to enable a participant to engage in community, social and/or recreational activities in a centre. Support delivered by a TTP provider.	Hours	\$50.68
04_180_0136_6_1_T	Group Activities In A Centre - 1:5 - Standard - Weekday Daytime - TTP	Provision of support to enable a participant to engage in community, social and/or recreational activities in a centre. Support delivered by a TTP provider.	Hours	\$21.24
04_181_0136_6_1_T	Group Activities In A Centre - 1:5 - Standard - Weekday Afternoon - TTP	Provision of support to enable a participant to engage in community, social and/or recreational activities in a centre. Support delivered by a TTP provider.	Hours	\$23.17
04_182_0136_6_1_T	Group Activities In A Centre - 1:5 - Standard - Saturday - TTP	Provision of support to enable a participant to engage in community, social and/or recreational activities in a centre. Support delivered by a TTP provider.	Hours	\$28.96

*NOTE: Temporary Transformation Payment (TTP) supports and codes will be used on all new service agreements. Support Item Numbers ending in a T are TTP Supports.*

*Pricing from 1 July 2022*

## Assistance with Social and Community Participation (cont'd)

04_183_0136_6_1_T	Group Activities In A Centre - 1:5 - Standard - Sunday - TTP	Provision of support to enable a participant to engage in community, social and/or recreational activities in a centre. Support delivered by a TTP provider.	Hours	\$36.69
04_184_0136_6_1_T	Group Activities In A Centre - 1:5 - Standard - Public Holiday - TTP	Provision of support to enable a participant to engage in community, social and/or recreational activities in a centre. Support delivered by a TTP provider.	Hours	\$44.42
04_185_0104_6_1_T	Group Activities In A Centre - 1:1 - Complex - Weekday Daytime - TTP	Provision of support to enable a participant to engage in community, social and/or recreational activities in a centre, where a support worker with additional qualifications and experience relevant to the participant's complex needs is required. Support delivered by a TTP provider.	Hours	\$71.43
04_186_0104_6_1_T	Group Activities In A Centre - 1:1 - Complex - Weekday Afternoon - TTP	Provision of support to enable a participant to engage in community, social and/or recreational activities in a centre, where a support worker with additional qualifications and experience relevant to the participant's complex needs is required. Support delivered by a TTP provider.	Hours	\$78.48
04_187_0104_6_1_T	Group Activities In A Centre - 1:1 - Complex - Saturday - TTP	Provision of support to enable a participant to engage in community, social and/or recreational activities in a centre, where a support worker with additional qualifications and experience relevant to the participant's complex needs is required. Support delivered by a TTP provider.	Hours	\$99.62
04_188_0104_6_1_T	Group Activities In A Centre - 1:1 - Complex - Sunday - TTP	Provision of support to enable a participant to engage in community, social and/or recreational activities in a centre, where a support worker with additional qualifications and experience relevant to the participant's complex needs is required. Support delivered by a TTP provider.	Hours	\$127.81

*NOTE: Temporary Transformation Payment (TTP) supports and codes will be used on all new service agreements. Support Item Numbers ending in a T are TTP Supports.*

*Pricing from 1 July 2022*

## Assistance with Social and Community Participation (cont'd)

04_189_0104_6_1_T	Group Activities In A Centre - 1:1 - Complex - Public Holiday - TTP	Provision of support to enable a participant to engage in community, social and/or recreational activities in a centre, where a support worker with additional qualifications and experience relevant to the participant's complex needs is required. Support delivered by a TTP provider.	Hours	\$156.00
04_190_0104_6_1_T	Group Activities In A Centre - 1:2 - Complex - Weekday Daytime - TTP	Provision of support to enable a participant to engage in community, social and/or recreational activities in a centre, where a support worker with additional qualifications and experience relevant to the participant's complex needs is required. Support delivered by a TTP provider.	Hours	\$41.00
04_191_0104_6_1_T	Group Activities In A Centre - 1:2 - Complex - Weekday Afternoon - TTP	Provision of support to enable a participant to engage in community, social and/or recreational activities in a centre, where a support worker with additional qualifications and experience relevant to the participant's complex needs is required. Support delivered by a TTP provider.	Hours	\$44.95
04_192_0104_6_1_T	Group Activities In A Centre - 1:2 - Complex - Saturday - TTP	Provision of support to enable a participant to engage in community, social and/or recreational activities in a centre, where a support worker with additional qualifications and experience relevant to the participant's complex needs is required. Support delivered by a TTP provider.	Hours	\$56.79
04_193_0104_6_1_T	Group Activities In A Centre - 1:2 - Complex - Sunday - TTP	Provision of support to enable a participant to engage in community, social and/or recreational activities in a centre, where a support worker with additional qualifications and experience relevant to the participant's complex needs is required. Support delivered by a TTP provider.	Hours	\$72.58

*NOTE: Temporary Transformation Payment (TTP) supports and codes will be used on all new service agreements. Support Item Numbers ending in a T are TTP Supports.*

*Pricing from 1 July 2022*

### Assistance with Social and Community Participation (cont'd)

04_194_0104_6_1_T	Group Activities In A Centre - 1:2 - Complex - Public Holiday - TTP	Provision of support to enable a participant to engage in community, social and/or recreational activities in a centre, where a support worker with additional qualifications and experience relevant to the participant's complex needs is required. Support delivered by a TTP provider.	Hours	\$88.36
04_195_0104_6_1_T	Group Activities In A Centre - 1:3 - Complex - Weekday Daytime - TTP	Provision of support to enable a participant to engage in community, social and/or recreational activities in a centre, where a support worker with additional qualifications and experience relevant to the participant's complex needs is required. Support delivered by a TTP provider.	Hours	\$30.86
04_196_0104_6_1_T	Group Activities In A Centre - 1:3 - Complex - Weekday Afternoon - TTP	Provision of support to enable a participant to engage in community, social and/or recreational activities in a centre, where a support worker with additional qualifications and experience relevant to the participant's complex needs is required. Support delivered by a TTP provider.	Hours	\$33.78
04_197_0104_6_1_T	Group Activities In A Centre - 1:3 - Complex - Saturday - TTP	Provision of support to enable a participant to engage in community, social and/or recreational activities in a centre, where a support worker with additional qualifications and experience relevant to the participant's complex needs is required. Support delivered by a TTP provider.	Hours	\$42.51
04_198_0104_6_1_T	Group Activities In A Centre - 1:3 - Complex - Sunday - TTP	Provision of support to enable a participant to engage in community, social and/or recreational activities in a centre, where a support worker with additional qualifications and experience relevant to the participant's complex needs is required. Support delivered by a TTP provider.	Hours	\$54.17

*NOTE: Temporary Transformation Payment (TTP) supports and codes will be used on all new service agreements. Support Item Numbers ending in a T are TTP Supports.*

*Pricing from 1 July 2022*

### Assistance with Social and Community Participation (cont'd)

04_199_0104_6_1_T	Group Activities In A Centre - 1:3 - Complex - Public Holiday - TTP	Provision of support to enable a participant to engage in community, social and/or recreational activities in a centre, where a support worker with additional qualifications and experience relevant to the participant's complex needs is required. Support delivered by a TTP provider.	Hours	\$65.82
04_200_0104_6_1_T	Group Activities In A Centre - 1:4 - Complex - Weekday Daytime - TTP	Provision of support to enable a participant to engage in community, social and/or recreational activities in a centre, where a support worker with additional qualifications and experience relevant to the participant's complex needs is required. Support delivered by a TTP provider.	Hours	\$25.79
04_201_0104_6_1_T	Group Activities In A Centre - 1:4 - Complex - Weekday Afternoon - TTP	Provision of support to enable a participant to engage in community, social and/or recreational activities in a centre, where a support worker with additional qualifications and experience relevant to the participant's complex needs is required. Support delivered by a TTP provider.	Hours	\$28.19
04_202_0104_6_1_T	Group Activities In A Centre - 1:4 - Complex - Saturday - TTP	Provision of support to enable a participant to engage in community, social and/or recreational activities in a centre, where a support worker with additional qualifications and experience relevant to the participant's complex needs is required. Support delivered by a TTP provider.	Hours	\$35.38
04_203_0104_6_1_T	Group Activities In A Centre - 1:4 - Complex - Sunday - TTP	Provision of support to enable a participant to engage in community, social and/or recreational activities in a centre, where a support worker with additional qualifications and experience relevant to the participant's complex needs is required. Support delivered by a TTP provider.	Hours	\$44.96

*NOTE: Temporary Transformation Payment (TTP) supports and codes will be used on all new service agreements. Support Item Numbers ending in a T are TTP Supports.*

*Pricing from 1 July 2022*

### Assistance with Social and Community Participation (cont'd)

04_204_0104_6_1_T	Group Activities In A Centre - 1:4 - Complex - Public Holiday - TTP	Provision of support to enable a participant to engage in community, social and/or recreational activities in a centre, where a support worker with additional qualifications and experience relevant to the participant's complex needs is required. Support delivered by a TTP provider.	Hours	\$54.54
04_205_0104_6_1_T	Group Activities In A Centre - 1:5 - Complex - Weekday Daytime - TTP	Provision of support to enable a participant to engage in community, social and/or recreational activities in a centre, where a support worker with additional qualifications and experience relevant to the participant's complex needs is required. Support delivered by a TTP provider.	Hours	\$22.75
04_206_0104_6_1_T	Group Activities In A Centre - 1:5 - Complex - Weekday Afternoon - TTP	Provision of support to enable a participant to engage in community, social and/or recreational activities in a centre, where a support worker with additional qualifications and experience relevant to the participant's complex needs is required. Support delivered by a TTP provider.	Hours	\$24.84
04_207_0104_6_1_T	Group Activities In A Centre - 1:5 - Complex - Saturday - TTP	Provision of support to enable a participant to engage in community, social and/or recreational activities in a centre, where a support worker with additional qualifications and experience relevant to the participant's complex needs is required. Support delivered by a TTP provider.	Hours	\$31.09
04_208_0104_6_1_T	Group Activities In A Centre - 1:5 - Complex - Sunday - TTP	Provision of support to enable a participant to engage in community, social and/or recreational activities in a centre, where a support worker with additional qualifications and experience relevant to the participant's complex needs is required. Support delivered by a TTP provider.	Hours	\$39.44

*NOTE: Temporary Transformation Payment (TTP) supports and codes will be used on all new service agreements. Support Item Numbers ending in a T are TTP Supports.*

*Pricing from 1 July 2022*



## Assistance with Social and Community Participation (cont'd)

04_209_0104_6_1_T	Group Activities In A Centre - 1:5 - Complex - Public Holiday - TTP	Provision of support to enable a participant to engage in community, social and/or recreational activities in a centre, where a support worker with additional qualifications and experience relevant to the participant's complex needs is required. Support delivered by a TTP provider.	Hours	\$47.78
04_210_0125_6_1	Community Social And Recreational Activities	Enable a participant to independently engage in community, social and recreational activities when costs of participation exceed an affordable level and without, the participant would be at risk of social isolation.	Each Support	
04_400_0104_1_1_T	Access Community Social And Rec Activities - Level 2 - Weekday Daytime-TTP	Supporting a participant to engage in community, social and/or recreational activities, where the support delivered is high intensity and a more skilled or experienced support worker is required. Support delivered by a TTP provider.	Hours	\$69.15
04_401_0104_1_1_T	Access Community Social And Rec Activities - Level 2 - Weekday Evening-TTP	Supporting a participant to engage in community, social and/or recreational activities, where the support delivered is high intensity and a more skilled or experienced support worker is required. Support delivered by a TTP provider.	Hours	\$76.20
04_402_0104_1_1_T	Access Community Social And Rec Activities - Level 2 - Saturday - TTP	Supporting a participant to engage in community, social and/or recreational activities, where the support delivered is high intensity and a more skilled or experienced support worker is required. Support delivered by a TTP provider.	Hours	\$97.34
04_403_0104_1_1_T	Access Community Social And Rec Activities - Level 2 - Sunday - TTP	Supporting a participant to engage in community, social and/or recreational activities, where the support delivered is high intensity and a more skilled or experienced support worker is required. Support delivered by a TTP provider.	Hours	\$125.53

*NOTE: Temporary Transformation Payment (TTP) supports and codes will be used on all new service agreements. Support Item Numbers ending in a T are TTP Supports.*

*Pricing from 1 July 2022*

## Assistance with Social and Community Participation (cont'd)

04_404_0104_1_1_T	Access Community Social And Rec Activities - Level 2 - Public Holiday-TTP	Supporting a participant to engage in community, social and/or recreational activities, where the support delivered is high intensity and a more skilled or experienced support worker is required. Support delivered by a TTP provider.	Hours	\$153.72
04_590_0125_6_1	Activity Based Transport	A provider can transport one or more participants to and/or from a community based support as part of that support. This includes things like supermarket trips with a Support Worker, going to footy with a Support Worker etc.	Each Support	0.97 \$2.76
04_591_0136_6_1	Activity Based Transport	A provider can transport one or more participants to and/or from a community based support as part of that support.	Each Support	0.97 \$2.76
04_592_0104_6_1	Activity Based Transport	A provider can transport one or more participants to and/or from a community based support as part of that support.	Each Support	0.97 \$2.76
04_599_0104_6_1	Capital Centre Cost	High Intensity	Hours	\$2.28
04_599_0136_6_1	Capital Centre Cost	Standard	Hours	\$2.28
04_600_0104_6_1_T	Group Activities - High Intensity - Weekday Daytime - TTP	Ratio: 1:1 - the rate will be reduced based on the client to staff ratio. This support item and rate will replace existing group support items as at 1/7/2022.	Hours	\$69.15
04_601_0104_6_1_T	Group Activities - High Intensity - Weekday Evening - TTP	Ratio: 1:1 - the rate will be reduced based on the client to staff ratio. This support item and rate will replace existing group support items as at 1/7/2022.	Hours	\$76.20
04_602_0104_6_1_T	Group Activities - High Intensity - Saturday - TTP	Ratio: 1:1 - the rate will be reduced based on the client to staff ratio. This support item and rate will replace existing group support items as at 1/7/2022.	Hours	\$97.34
04_603_0104_6_1_T	Group Activities - High Intensity - Sunday - TTP	Ratio: 1:1 - the rate will be reduced based on the client to staff ratio. This support item and rate will replace existing group support items as at 1/7/2022.	Hours	\$125.53
04_604_0104_6_1_T	Group Activities - High Intensity - Public Holiday - TTP	Ratio: 1:1 - the rate will be reduced based on the client to staff ratio. This support item and rate will replace existing group support items as at 1/7/2022.	Hours	\$153.72
04_799_0104_6_1	Provider travel - non-labour costs		Each Support	\$0.97
04_799_0125_6_1	Provider travel - non-labour costs		Each Support	\$0.97

*NOTE: Temporary Transformation Payment (TTP) supports and codes will be used on all new service agreements. Support Item Numbers ending in a T are TTP Supports.*

*Pricing from 1 July 2022*

04_799_0136_6_1	Provider travel - non-labour costs		Each Support	\$0.97
-----------------	------------------------------------	--	--------------	--------

*NOTE: Temporary Transformation Payment (TTP) supports and codes will be used on all new service agreements. Support Item Numbers ending in a T are TTP Supports.*

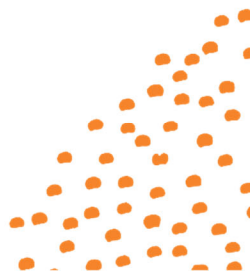
*Pricing from 1 July 2022*

## Home Modifications

Support Item Number	Support Item	Support Item Description	Unit of Measure	Unit Price
06_431_0131_2_2	Specialist Disability Accommodation (SDA)	SDA is an adjusted contribution to the cost of the physical building, including the land it is on. The quote will reflect unique dwelling price based on the SDA enrolment process.	Each	To be quoted
06_432_0131_2_2	SDA Vacancy - Person-Specific Adjustment	A temporary payment for providers, available in limited circumstances when a participant moves out of an SDA dwelling accommodates 4 or more residents.	Each	To be quoted

*NOTE: Temporary Transformation Payment (TTP) supports and codes will be used on all new service agreements. Support Item Numbers ending in a T are TTP Supports.*

*Pricing from 1 July 2022*

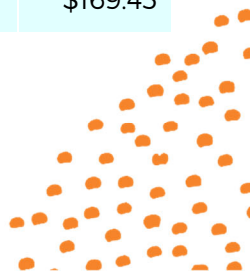


## Assistance In Coordinating Or Managing Life Stages, Transitions And Supports

Support Item Number	Support Item Name	Support Item Description	Unit of Measure	Unit Price
07_001_0106_8_3	Level 1: Support Connection	Assistance for participants to implement their plan by strengthening the ability to connect with the broader systems of supports and understand the purpose of the funded supports and participate in the community. Support Connection will assist a participant to understand the aspects of the plan, assisting in ongoing management of supports, and answer questions as they arise.	Hour	\$70.87
07_002_0106_8_3	Level 2: Coordination Of Supports	Further qualifications/experience required to strengthen a participant's ability to design and the build their supports with an emphasis on linking the broader systems of support across a complex service delivery environment. Coordination of Supports is to focus on supporting participants to direct their lives, not just their services. This may include resolving points of crisis, and developing resilience in the participant's network.	Hour	\$100.14
07_101_0106_6_3	Psychosocial Recovery Coaching - Weekday Daytime		Hour	\$93.34
07_102_0106_6_3	Psychosocial Recovery Coaching - Weekday Evening		Hour	\$102.86
07_103_0106_6_3	Psychosocial Recovery Coaching - Weekday Night		Hour	\$104.76
07_104_0106_6_3	Psychosocial Recovery Coaching - Saturday		Hour	\$131.40
07_105_0106_6_3	Psychosocial Recovery Coaching - Sunday		Hour	\$169.45

*NOTE: Temporary Transformation Payment (TTP) supports and codes will be used on all new service agreements. Support Item Numbers ending in a T are TTP Supports.*

*Pricing from 1 July 2022*



### Assistance in Coordinating or Managing Life Stages, Transitions and Supports (cont'd)

Support Item Number	Support Item Name	Support Item Description	Unit of Measure	Unit Price
07_106_0106_6_3	Psychosocial Recovery Coaching - Public Holiday		Hour	\$207.50
07_501_0106_6_3	Activity Based Transport	A provider can transport one or more participants to and/or from a community based support as part of that support.	Per KM	\$0.97 \$2.76
07_799_0106_6_3	Provider travel - non-labour costs		Per KM	\$0.97

*NOTE: Temporary Transformation Payment (TTP) supports and codes will be used on all new service agreements. Support Item Numbers ending in a T are TTP Supports.*

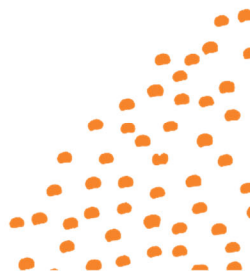
*Pricing from 1 July 2022*

## Increased Social and Community Participation

Support Item Number	Support Item Name	Support Item Description	Unit of Measure	Unit Price
09_006_0106_6_3	Life Transition Planning Incl. Mentoring Peer-Support And Indiv Skill Develop	Establishing volunteer assistance within the participant's home or community to develop skills. For instance, assistance in attending appointments, shopping, bill paying, taking part in social activities and maintaining contact with others.	Hour	\$70.87
09_008_0116_6_3	Innovative Community Participation	Mainstream services that promote inclusion of people with disability to expand opportunities for community participation and employment.	Each occurrence	
09_009_0117_6_3	Skills Development And Training	Individual life skills development and training including public transport training and support, developing skills for community, social and recreational participation.	Hour	\$70.87
09_590_0106_6_3	Activity Based Transport	A provider can transport one or more participants to and/or from a community based support as part of that support.	Per Km	\$0.97 \$2.76
09_591_0117_6_3	Activity Based Transport	A provider can transport one or more participants to and/or from a community based support as part of that support.	Per Km	\$0.97 \$2.76
09_799_0106_6_3	Provider travel - non-labour costs	Assistance In Coordinating Or Managing Life Stages, Transitions And Supports	Per Km	\$0.97
09_799_0117_8_3	Provider travel - non-labour costs	Development Of Daily Living And Life Skills	Per Km	\$0.97

*NOTE: Temporary Transformation Payment (TTP) supports and codes will be used on all new service agreements. Support Item Numbers ending in a T are TTP Supports.*

*Pricing from 1 July 2022*

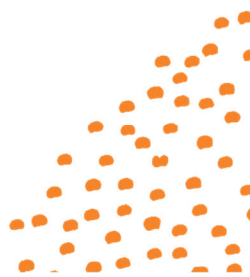


## Improved Relationships

Support Item Number	Support Item	Support Item Description	Unit of Measure	Unit Price
11_022_0110_7_3	Specialist Behavioural Intervention Support	Highly specialised intensive support interventions to address significantly harmful or persistent behaviours of concern. Development of behaviour support plans that temporarily use restrictive practices, with intention to minimise use of these practices.	Hour	\$ 234.83
11_023_0110_7_3	Behaviour Management Plan Incl. Training In Behaviour Management Strategies	Training for carers and others in behaviour management strategies required due the participant's disability.	Hour	\$ 193.99
11_024_0117_7_3	Individual Social Skills Development	Social skills development with an individual, for participation in community and social activities.	Hour	\$70.87
11_590_0117_7_3	Activity Based Transport	A provider can transport one or more participants to and/or from a community based support as part of that support.	Per Km	\$0.97 \$2.76
11_799_0117_7_3	Provider travel - non-labour costs	Improved relationships	Per Km	\$0.97

*NOTE: Temporary Transformation Payment (TTP) supports and codes will be used on all new service agreements. Support Item Numbers ending in a T are TTP Supports.*

*Pricing from 1 July 2022*





## Improved Daily Living Skills

Support Item Number	Support Item	Support Item Description	Unit of Measure	Unit Price
15_035_0106_1_3	Assistance With Decision Making, Daily Planning and Budgeting	Provision of time limited support to assist a person to develop and maintain daily budget, including assisting in planning purchases.	Hour	\$62.17
15_037_0117_1_3	Individual Skill Development And Training Including Public Transport Training	Individual training provided in the home for general life skills to increase independence.	Hour	\$62.17
15_038_0117_1_3	Training For Carers/Parents	Training for carers in matters related to caring for a person with disability.	Hour	\$70.87
15_799_0106_1_3	Provider travel - non-labour costs	Assistance In Coordinating Or Managing Life Stages, Transitions And Supports	Per Km	\$0.97
15_799_0117_1_3	Provider travel - non-labour costs	Development Of Daily Living And Life Skills	Per Km	\$0.97

*NOTE: Temporary Transformation Payment (TTP) supports and codes will be used on all new service agreements. Support Item Numbers ending in a T are TTP Supports.*

*Pricing from 1 July 2022*

